

----- Pump Station Drainage Basin

PS Lift Stations

Windtree Sewer Area

* Plus Extension of Local Sewers

Gravity Area (38 Max. Lots) \$23,088.80

Gravity Area (Max. 71 +/- potential lots) \$7,992.60

Gravity/Pump Area (47 Max Lots) \$11,111.11

Windtree (100+- Lots) \$11,111.11

Lower May Creek/Windtree Sewer Improvements Connection Charges 3/26/2016

+ or - 15 Lots / pumped

43 max / pumped

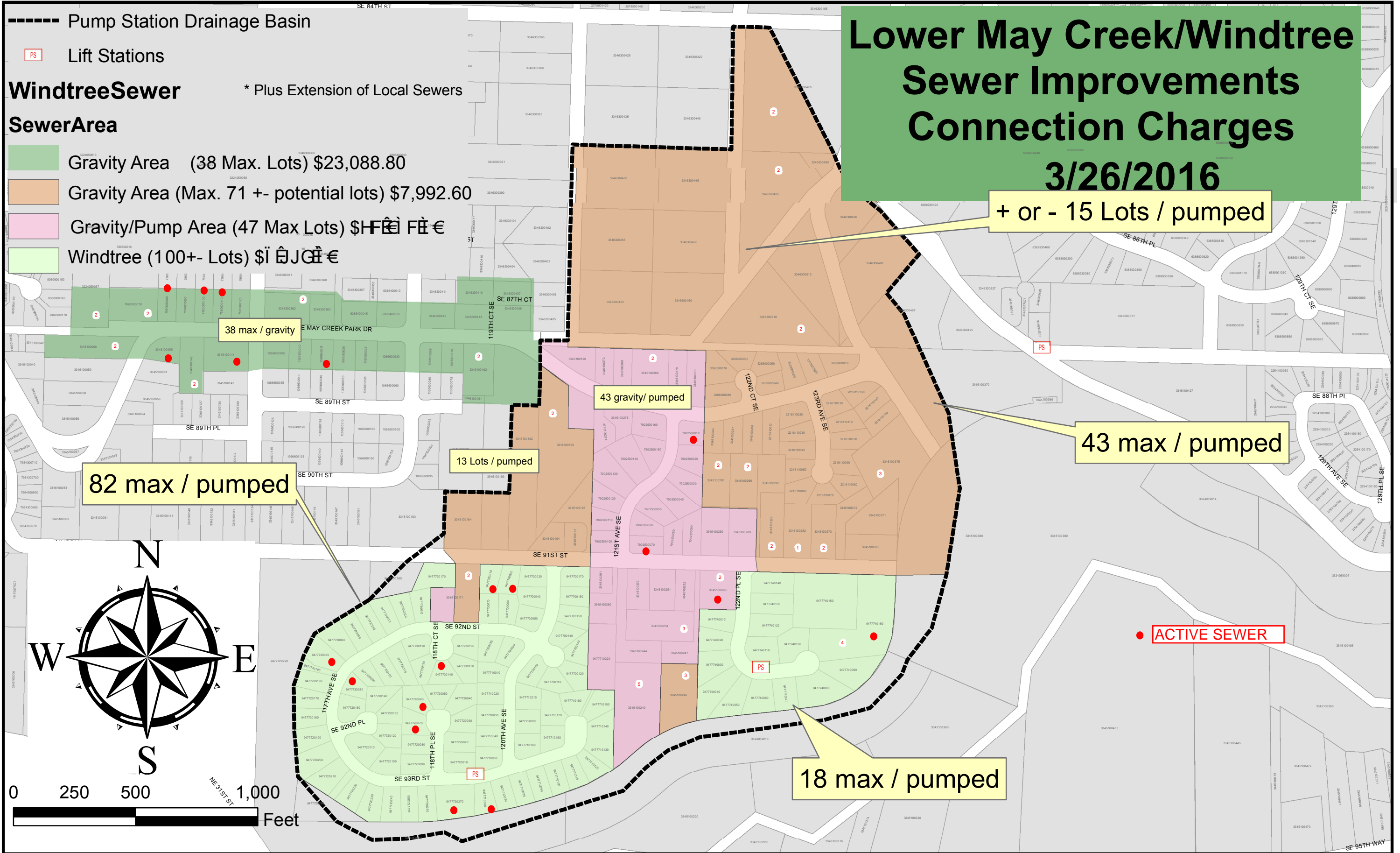
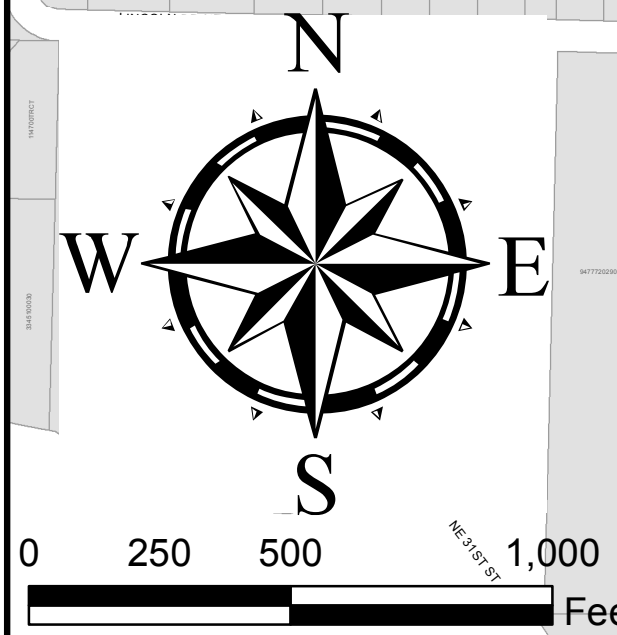
82 max / pumped

13 Lots / pumped

43 gravity/ pumped

18 max / pumped

ACTIVE SEWER



**COAL CREEK UTILITY DISTRICT
LOWER MAY CREEK / WINDTREE
SEWER IMPROVEMENTS SEWER
CONNECTION COSTS
3/26/16 - 3/25/17**

SERVICE AREA See Map for Details	New Gravity and Force Mains Installed	Existing 'Dry' Sewers or new mains need to be installed	New Gravity Sewer Mains Installed
COST SHARE OF NEW FACILITIES (Gravity Mains, Lift Stations, Force Mains, Etc.)	\$31,081.40 per Lot ³	\$7,992.60 per Lot ³	\$23,088.80 per Lot ³
CURRENT DISTRICT SEWER GENERAL FACILITY CHARGE (Buildings, Equipment, Regional Pump Stations, etc.)	\$1,850 per Lot	\$1,850 per Lot	\$1,850 per Lot
ESTIMATED COST TO CONSTRUCT PRIVATE SIDE SEWER FROM THE HOUSE TO THE STREET AND ABANDON EXISTING SEPTIC SYSTEM (Paid by owner to side sewer contractor) ¹	\$3,000 - \$5,000	Existing 'Dry' Sewers \$3,000 - \$5,000 or area needs to have sewer main extended to provide service	\$3,000 - \$5,000
CURRENT DISTRICT SIDE SEWER PERMIT (One-Time Fee)	\$200	\$200	\$200 Per Lot or Side Sewer
CURRENT DISTRICT SEWER SERVICE CHARGE (Local Conveyance, O&M, Etc.)	\$21.07/Month	\$21.07/Month	\$21.07/Month/Unit
CURRENT KING COUNTY TREATMENT AND CONVEYANCE CHARGE (Regional Conveyance, Treatment, O&M, Etc.)	\$42.03/Month	\$42.03/Month	\$42.03/Month/Unit
TOTAL DISTRICT BI-MONTHLY BILL	\$126.19	\$126.19	\$126.19/Unit
CURRENT KING COUNTY CAPACITY CHARGE (Paid Directly to K.C.) ² (For Future Regional Capacity Upgrades and Capital Improvements)	\$58.70/Month ²	\$58.70/Month ²	\$58.70/Month Equiv. ERU ²

1. Cost Depends on distance between CCUD Sewer Stub and where customer Sewer Stub Comes Out of House
2. 2016 Rates = \$58.70/Month for 15 Years. Can Be Paid in One Lump Sum as Determined by King Co.
3. An interest factor of 5% simple interest per year up to 10 years will be added per RCW 57.08.005(10)
4. The fees shown assume the multi-family property develops as an assisted living facility, which is currently being constructed.